



PIONNIER

Vessel specifications
September 2021

Vessel Specifications

GENERAL

Place of Build	ORSKOV, DENMARK
Vessel Type	AHTS-UT 728L
Year Built	2002
Flag	French, RIF
Call Sign	FLYB
Class	DNV : HL E0.FiFi2.DYNPOS DPS2.Dk(+).Oil Rec
IMO	9239757
Flag ID	RI 936105 F

MAIN DIMENSIONS

Length Overall	73,605m
Beam	16,80m
Maximum Draft	6,30m
Net Registered Tonnage	900 UMS
Gross Registered Tonnage	2642 UMS

MACHINERY & PROPULSION

Main Propulsion Number	4 X 3000 Kw at 600 rpm
Main Propulsion Type	BERGEN BR 32:40 L6P
Total BHP	16300
Propellers	2 nozzles propellers
Bow Thruster	One bow in tunnel 883 Kw One azimuthal 883kW
Stern Thrust	One stern in tunnel 883 kW
Main Generators	2 X CAT 3408 C , 370kW
Emergency Generators	1 X CAT 3306, 174 Kw
Rudders	becker rudders

PERFORMANCES

Fuel Consumption at Max Speed	45 m3 per day @ 16 knots
Fuel Consumption at Economic Speed	18 m3 per day @ 10 knots
Fuel Consumption at Service speed	25m3 per day @ 12 knots

CARGO CAPABILITIES

Fresh Water	701m3
Drill Water	1911m3
Fuel Capacity	883m3
ORO	1047m3 at 100%
Dead Weight	2195 tonnes
Clear Deck Area	500 m2
Deck Cargo	1000T @ 510T/m2

ACCOMMODATION

Crew Accommodation	13 (13 X 1)
Passengers	12 (3 X 4)
Messroom	1
Office	1

LIFE SAVING APPARATUS

Liferafts	4 X 25 p
Fast rescue boat	1x FR Boat, SEABER 23
Scramble Net	1x Rescue Scoop UFAS 7800

EXTERNAL FIRE FIGHTING

FIFI Pump	2x 1800m3/h
Monitor	2x2400m3/h-16bars
Throw x Height	180m (L) x 110m (H)

COMMUNICATIONS EQUIPMENT

MF/HF radio	1 SAILOR MF 6301
VHF Radio	2 X SAILOR RT 4822 / 1 SAILOR 6222
Portable VHF Radio's	1 VHF HORIZON HX 400
Satellite Communications	VSAT 20MHz
E.P.I.R.B	TRON 60 S
GMDSS Compliance	A1,A2,A3
MMSI Number	228382600
SSAS	FURUNO FELCOM 16

NAVIGATION EQUIPMENT

Radar No. 1	FURUNO, FR2115 X Band
Radar No. 2	FURUNO, FR2835S Band
GPS	GPS NAVIGATOR GP-170
Gyro GPS	KONGSBERG DPS 122
Gyro Compass	3 X C PLATH MK1
Echo Sounder	FURUNO FE-700
Navtex	ICS, NAV5
Auto Pilot	SPERRY AP-1500
Wind sensors	2x Obsermet OMC-160
DGPS	KONGSBERG DPS 122 / KONGSBERG DPS 112
Electronic charts	TECDIS JET TELKO 56082 / TECDIS JET TELKO 56083

DECK MACHINERY

Tugger Winch	2x Hydraulik (20t)
Capstan	2x Hydraulik (10t)
Cranes	TTS Knuckle boom 10t/5t swl @10/16m TTS knuckle boom 5t/3t swl @10/16m HEILA hr 200/206-2bj 10.2t/3.6t swl @ 16m/9.8m

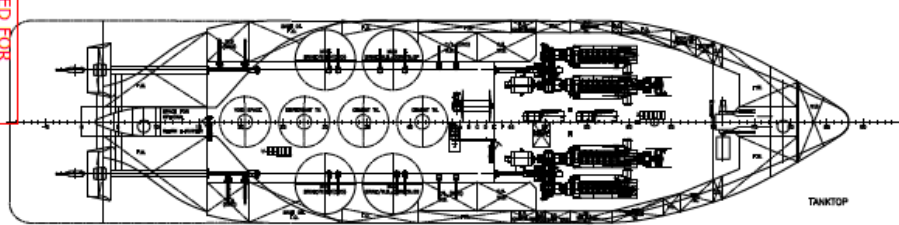
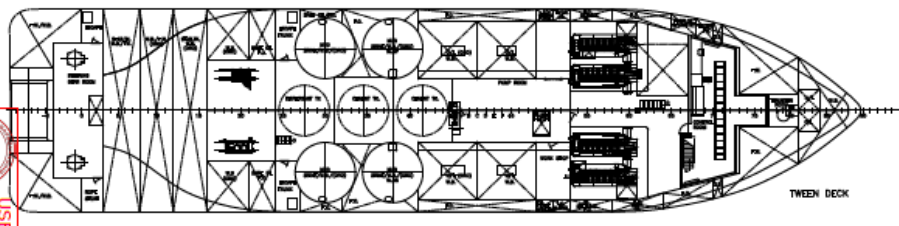
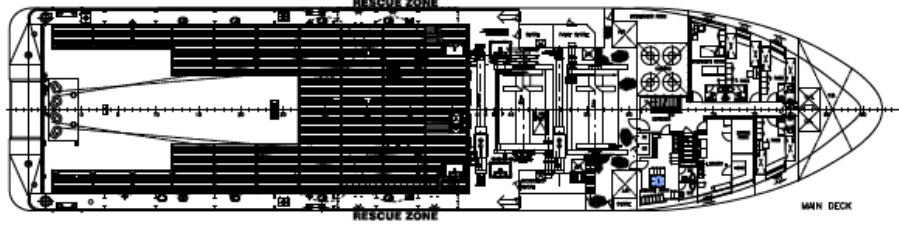
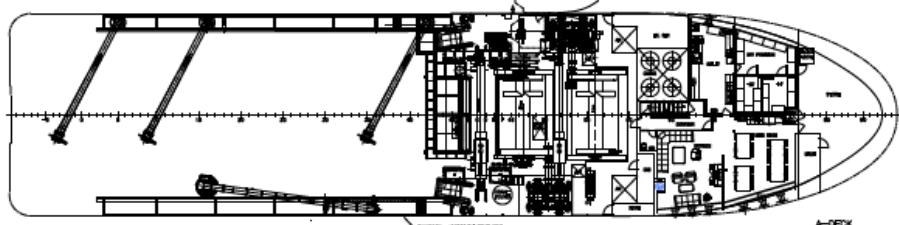
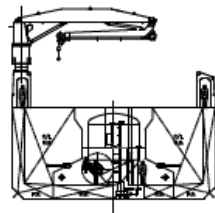
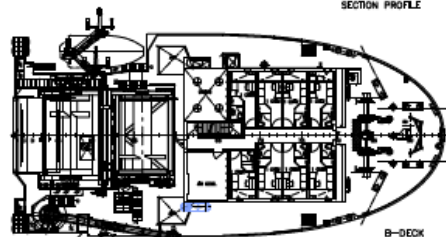
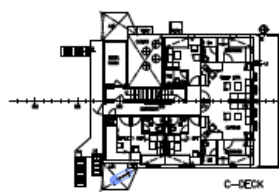
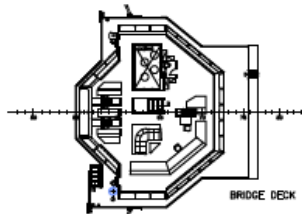
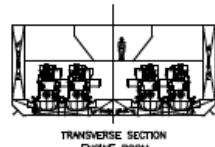
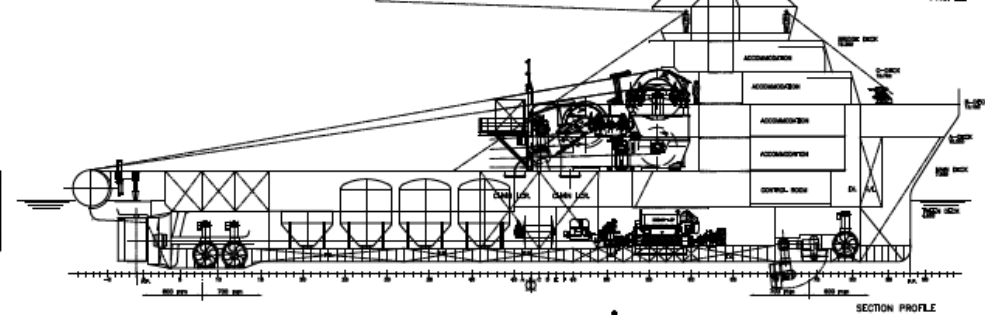
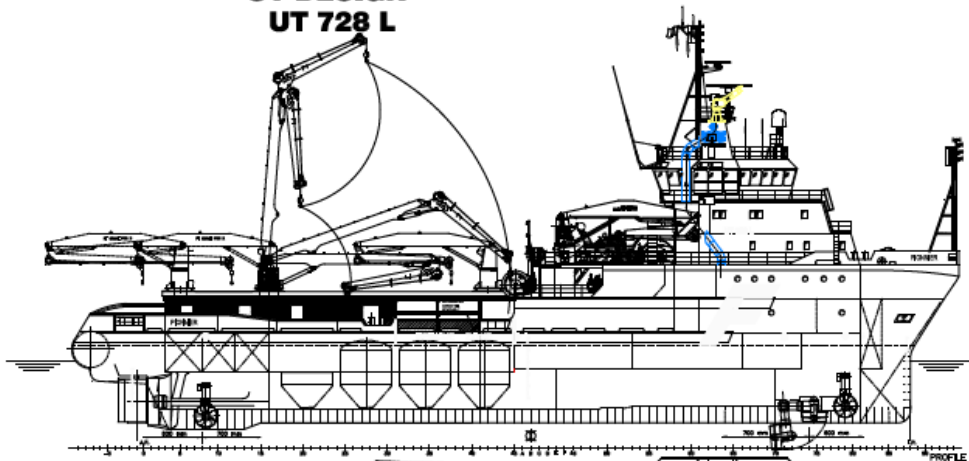
TOWING & ANCHOR HANDLING

Bollard Pull	174 t
Winch	Brattvaag 400 ts pull
Line Pull	400 t
Brake Capacity	550 t
Anchor Handling Wire Capacity	4490m of 84mm wire
Tow Drum Capacity	4490m of 84mm wire
Cable lifter	J hook and grapnel
Stern Roller	Dia 3m, Length 5m, 550t
Tow Pins	4x Karm 250t
Shark Jaws	2 X Karm 750t

DP

Dynamic Positioning	Rolls-Royce DP System Class 2
DP references	Fam Beam & DGPS
Gyro	3x C PLATH MK1
DGPSS	KONGSBERG DPS 122 / KONGSBERG DPS 112
Wind Sensors	2x Obsermet OMC-160
MRU	3x SEATEX MRU

UT DESIGN UT 728 L



MAIN PARTICULARS

L O/A	approx. 73.60 m
L P/P	approx. 63.80 m
BREADTH MLD	approx. 16.80 m
DEPTH MAIN DECK	approx. 7.50 m
MAX DRAFT (L/2)	approx. 6.30 m
DESIGN DRAHT (L/2)	approx. 5.20 m

The drawing/arrangement is the property of Rolfo-Troyce AS. It is not to be reproduced, copied, or used for any purpose without the prior written consent of Rolfo-Troyce AS. The drawing/arrangement is intended for the design and construction of the ship only. It is not to be used for any other purpose. Rolfo-Troyce AS is not responsible for any errors or omissions in the drawing/arrangement. Rolfo-Troyce AS is not responsible for any damage or loss resulting from the use of the drawing/arrangement. Rolfo-Troyce AS is not responsible for any liability arising from the use of the drawing/arrangement.

Rolfo-Troyce AS
Rolf-Troyce
LUTVANG
NORWAY

USED FOR INFORMATION
Not subject to Approval 222-01-050
Date: 2020-01-17

GENERAL ARRANGEMENT		SCALE	DATE
1:200	2020-01-17		
PROJECT NO. 00/7193			
DRAWING NO. P-1-65490			



Head Office

16 rue Rivay

92300 LEVALLOIS PERRET

FRANCE

T: +33 (0)1 41 27 20 80

@ contact@seaowlgroup.com

www.seaowlgroup.com