



SAPEUR

Vessel specifications
october 2021

Vessel Specifications

GENERAL	
Place of Build	HAVYARD LEIRVIK AS, NORWAY
Vessel Type	AHTS MOSS 424
Year Built	2002
Flag	French, RIF
Call Sign	FLYA
Class	DNV 1A1, FIF1 2, Supply vessel DPS2, E0, OILREC, TMON
IMO	9270397
Flag ID	RI936104E

MAIN DIMENSIONS	
Length Overall	73,85m
Beam	16,90m
Maximum Draft	6,90m
Net Registered Tonnage	817
Gross Registered Tonnage	2725

MACHINERY & PROPULSION	
Main Propulsion Number	4 X MAK 2880Kw @ 600 RPM
Main Propulsion Type	MAK 6M32C
Total BHP	15620 BHP
Propellers	2 Kamewa 4 Blades in nozzles, dia 3,9m, 152 RPM
Bow Thruster	2 bow 883 Kw in tunnel. 1 azimuth 883Kw 360° ret=2649Kw
Stern Thrust	1x 883Kw in tunnel
Main Generators	2x CAT 3408 (463 KVA)
Emergency Generators	1X CAT 3306 (218KVA)
Rudders	2 high lift flap rudders, 7,6sm

PERFORMANCES	
Fuel Consumption at Max Speed	44m³/t per day @ 15,5knts
Fuel Consumption at Economic Speed	16m³/t per day @ 10,5knts
Fuel Consumption at Service speed	22m³/t per day @ 13,5knts
Standby	8m³/t per day idling
DP	24m³/t per day

CARGO CAPABILITIES	
Fresh Water	769m³
Drill Water	1022m³
Fuel Capacity	1131m³
Dead Weight	2870T @ 6,84m
Clear Deck Area	546m²
Deck Cargo	1000T @ 5-10T/m²

ACCOMMODATION	
Crew Accommodation	12 (10x1 + 1x2 (recreation room))
Passengers	total 12 (2x1 + 3x2 + 1x4)
Messroom	1 with 2 tables for 18
Meeting Room / Rest Room	2 - 1 for crew - 1 for passengers

LIFE SAVING APPARATUS	
Liferafts	4 x 25 pers
Work boat	1x PATROL 550 - 115CV MECURY - 11 pax
Fast rescue boat	1 FRC WEEDO 17 X 70CV - 6 pax
Scramble Net	1 MARKUS 1,2M (wide) X 4,50M (deep)

EXTERNAL FIRE FIGHTING	
FIFI Pump	2X 3600 M³/H
Monitor	3X 2400 M³/H - 16Bars
Throw x Height	180m (length) X 110m (High)

COMMUNICATIONS EQUIPMENT	
MF/HF radio	SAILOR 6301
VHF Radio	2X(2JHS 32B) + 1X SAILOR6248 VHF
Portable VHF Radio's	3X JOTRON TR 20
Satellite Communications	VSAT 20MHZ - IRIDIUM Pilot
E.P.I.R.B	JOTRON TRON 60S
GMDSS Compliance	A1,A2,A3
MMSI Number	228381900
SSAS	SAILOR TT 3000 SSAS

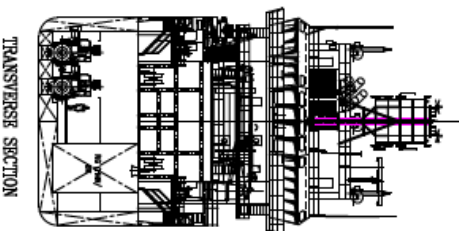
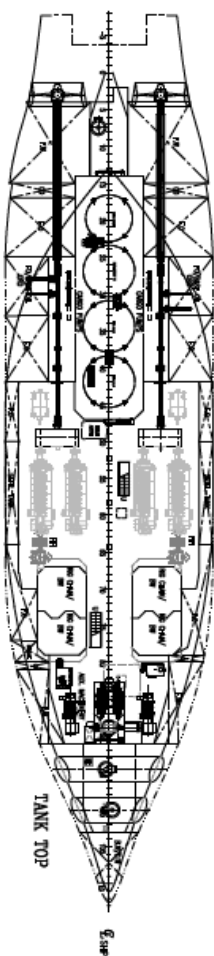
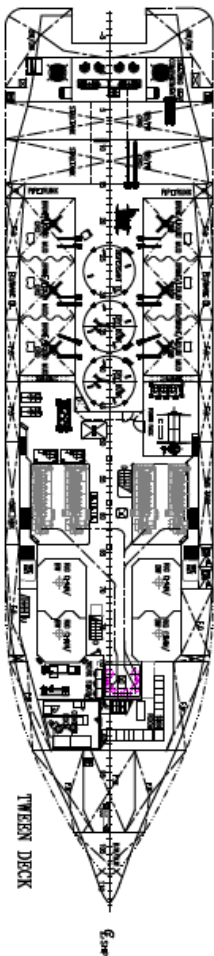
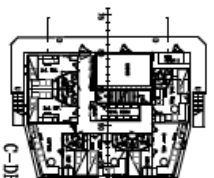
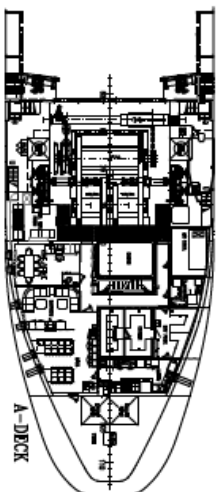
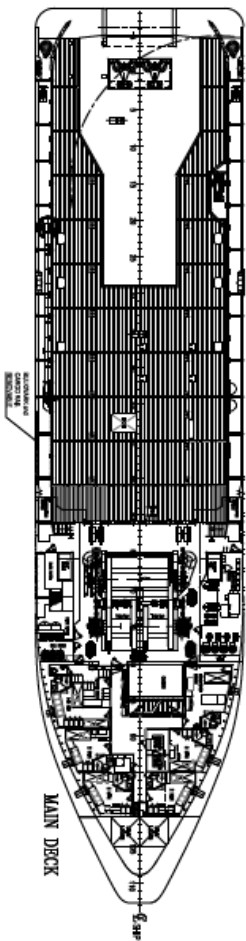
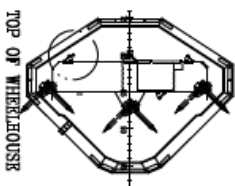
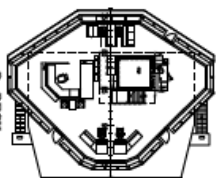
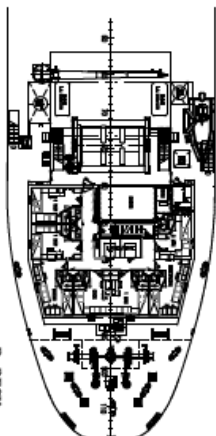
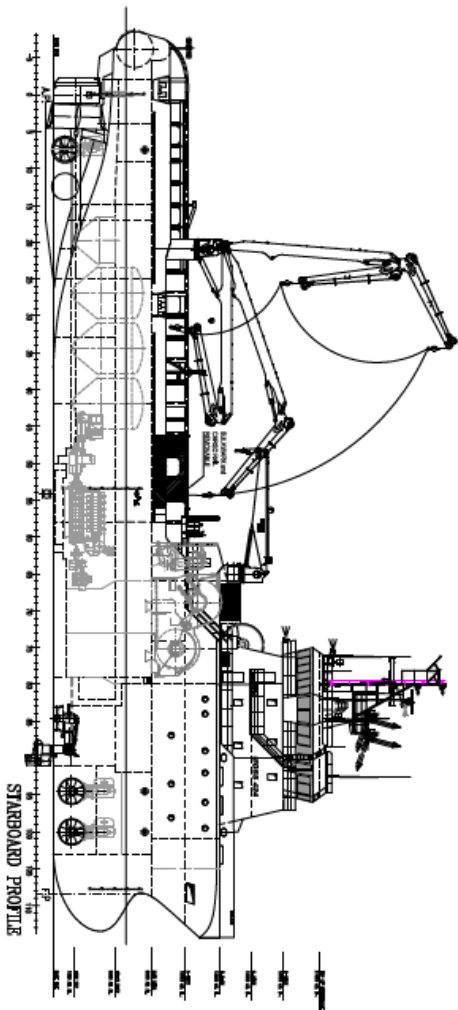
NAVIGATION EQUIPMENT	
Radar No. 1	SAM Multipilot 1100 XBand
Radar No. 2	FURUNO FAR 2238 S-NXT Sband
GPS	JRC-JLR 7700 MK II
Gyro GPS	GPS COMPASS JLR-21/31
Satellite compass	ANSCHUTZ STD20 + 1 ALPHATRON MIDCOURSE
Echo Sounder	JRC NDZ 127C-SKIPPER GDS 101
Navtex	FURUNO NX700
Auto Pilot	ANSCHUTZ PILOTSTAR D
Electronic charts	FULL ECDIS TRANSAS

DECK MACHINERY	
Tugger Winch	2X Hydraulik (15T)
Capstan	2X Hydraulik (10T)
Cranes	TTS Telescopic 8,3T-5T @ 9,7m-15m PALFINGER 5,86T-1,955T @ 4,4m-11,9m HEILA 10,2T - 6,6T @ 16m - 20m harbour

TOWING & ANCHOR HANDLING	
Bollard Pull	184,8T
Winch	Braatwaag 400T PULL
Line Pull	400T
Brake Capacity	550T
Anchor Handling Wire Capacity	1X 4600m length
Tow Drum Capacity	2X 1600m length
Cable lifter	2X 76mm
Stern Roller	Dia. 3m x 6,0m length - SWL 550T
Tow Pins	4X Karm 350mm
Shark Jaws	2 Karm forks chain/cable up to 165mm dia / SWL 650T

OIL RECOVERY EQUIPMENT	
Skimmer	NAVY (TRANSREC 250 - LUT 80)
Booms	NAVY + 1 permanent REYCAU stored on board 300m
Sweeping arms	NAVY (12m X 4m X 3,5m)
Discharging pumps	2x pump Allweiler 250 - 150m³/h @ 3 - 7 bars
Heating capacity	1070Kw for 1054m³
ORO capacity	1054m³ in 10 tanks

DP	
Dynamic Positioning	KONGSBERG DP2 - SDP24
DP references	2X DGPS - 1 FANBEAM
Gyro	3X gyros, Anschutz, Alphanon, JLR-21/31
DGPS	1X DPS SEATEX 122 - 1X DPS I2C KONGSBERG
Wind Sensors	2X OMC 139 Wind Display
MRU	2X SEATEX



PRINCIPAL DIMENSIONS

LENGTH OVER ALL : 73.85 M
 LENGTH BETWEEN PERP. : 65.00 M
 BREADTH MOULDED : 16.90 M
 DEPTH MOULDED : 8.00 M
 DRAUGHT, SEATING : 6.90 M

CLASS

ABS ● A1 ● Offshore Support Vessel, AH,
 ● ABS ● ACCU Oil Recovery
 ● Fire Fighting Vessel, Class 2

V/A 000, HAYWARD-LEIRVIK, N-0853 LEIRVIK I SØRA, NORWAY

NO.	DESCRIPTION	UNIT	VALUE
18	GENERAL WORKSHIP	121219	100
17	GENERAL WORKSHIP	301035	100
16	GENERAL WORKSHIP	301035	100
15	GENERAL WORKSHIP	301035	100
14	GENERAL WORKSHIP	301035	100
13	GENERAL WORKSHIP	301035	100
12	GENERAL WORKSHIP	301035	100
11	GENERAL WORKSHIP	301035	100
10	GENERAL WORKSHIP	301035	100
9	GENERAL WORKSHIP	301035	100
8	GENERAL WORKSHIP	301035	100
7	GENERAL WORKSHIP	301035	100
6	GENERAL WORKSHIP	301035	100
5	GENERAL WORKSHIP	301035	100
4	GENERAL WORKSHIP	301035	100
3	GENERAL WORKSHIP	301035	100
2	GENERAL WORKSHIP	301035	100
1	GENERAL WORKSHIP	301035	100

GENERAL ARRANGEMENT

MOSS 424

HAUVAND
 HAVNØY LARVIK AS
 Havneveien 141
 5770 HAVNØY
 E-post: havn@havlundhavneoy.no
 Tlf: 91102001

MOSS 424
 Havneveien 141
 5770 HAVNØY
 E-post: havn@havlundhavneoy.no
 Tlf: 91102001

moosmaritime

USED FOR INFORMATION
 Not Subject to Approval
 Date: 2020-01-14



Head Office

16 rue Rivay

92300 LEVALLOIS PERRET

FRANCE

T: +33 (0)1 41 27 20 80

@ contact@seaowlgroup.com

www.seaowlgroup.com